



WID TUG 2915 HYBRID[®]

“FREGATE”

GENERAL

Yardnumber	571766 (Damen Shipyards Hardinxveld)
Delivery date	May 2018
Basic functions	Towing, mooring, pushing, Water Injection Dredging
Classification	Bureau Veritas I ✕ HULL • MACH Tug Unrestricted Navigation AUT UMS, FiFi 1, IWS, Green Passport
Flag	French
Owner	Dutch Dredging De Boer & Iskes

DIMENSIONS

Length overall	29.2 m
Beam overall	15.04 m
Depth at sides	5.50
Draught Max	5.10 m
WID Depth Max.	10.5 m
Displacement	577 t

TANK CAPACITIES

Fuel oil	118.0 m ³
Fresh Water	40.0 m ³
Lubrication oil	7.7 m ³
Used oil	8.0 m ³
Sewage	7.0 m ³
Bilge water	7.0 m ³
Foam	25.0 m ³

PERFORMANCES

Bollard pull max	41.3 t
Speed	12.2 kn

PROPULSION SYSTEM

Main engines	2x Caterpillar Type 3512C
Total Power	2850 bkW @ 1600 rpm
Main Power Generators	2x 1058 ekW @ 690 VAC 50Hz
Propulsion	2x Veth Azimuth Thrusters VZ 1250 VHD
E-Motors Thrusters	2x 400 kW 690VAC 60Hz
Diameter	2x 2100mm Veth
Bow thruster	1x Veth VT240 tunnel, 200 kW @ 1500rpm 980mm prop.

ELECTRICAL EQUIPMENT

Generator Sets	1x Caterpillar C7.1, 150 ekW, 188 kVA, 50 Hz, 400VAC 1x Caterpillar C-04.4, 107 kVA, 50Hz, 230/400V AC
Solar Panels	8 pc. for loading batteries

DECK LAY-OUT

Anchor	2x 430 kg HHP
Anchor Winch	2x Electric separate winches
Deck Crane	1x HS Marine AK30 HE2, 2.0 ton(m) @ 9.21m With winch kit with SWL2,0T
Electric Winch Forward	1x R-TW-E-447 Double drum winch Drum1, pull 44T @ 8.5m/min or 14T @ 24m/min BHF 150T, stor. cap. Ø80mm 200m, Drum2 pull 44T @ 8m/min or 14T @ 24m/min BHF 150T, stor. cap. Ø48mm 800m
Winch Aft	1x Single split drum, for lowering the WID arm with steel wire
Water Injection Dredging	Equipment for water injection dredging Approx. 10400m ³ /hr total capacity
MOB Boat	1x RIBO 450 Rescue Boat 1x Davit RHS 10 – 3.5

SECONDARY SHIP SYSTEMS

WID Pumps	2x BP6055LD, 5200m ³ /hr @ 2 bar
E-Motor WID Pumps	2x 340 kW @ 690 VAC 60Hz
Compressor	1x ATLASCOPCO GA132 MAS-7.5-60, 132kW 1490 m ³ /hr @ 7,5Bar
Fifi	1x FiFi 1 system 2650m ³ /hr FFS, with 2x remote operated monitors and prewetting

ACCOMMODATION

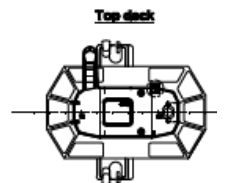
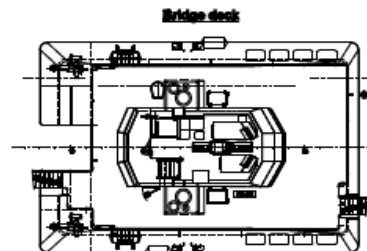
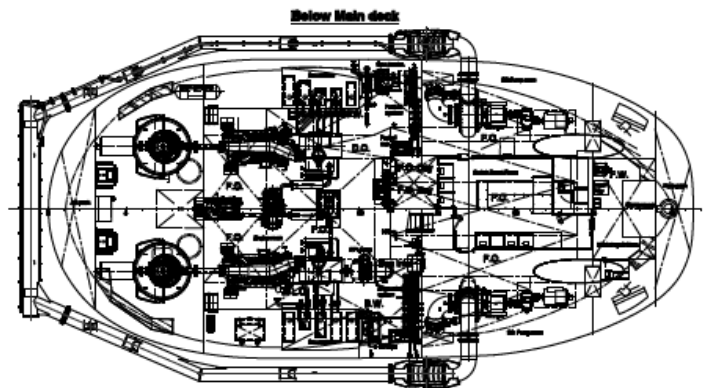
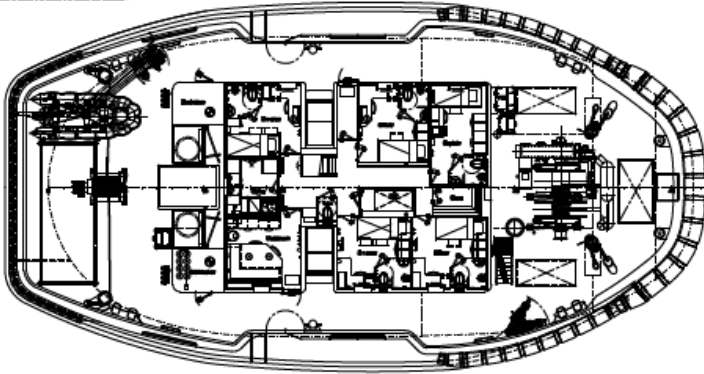
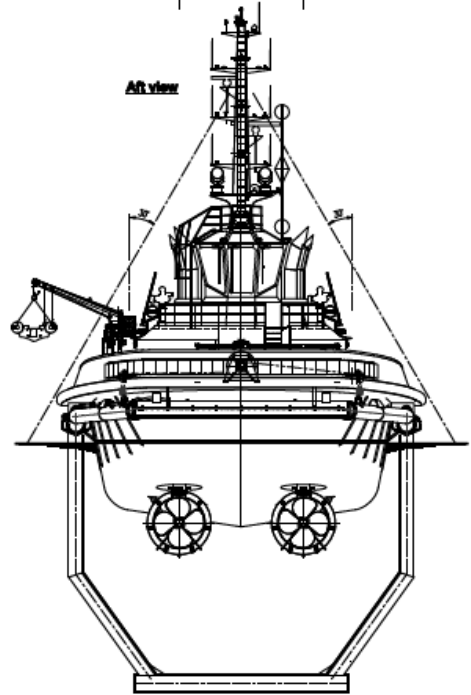
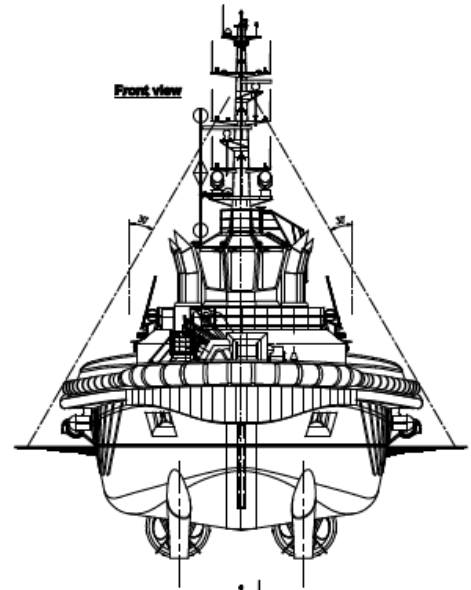
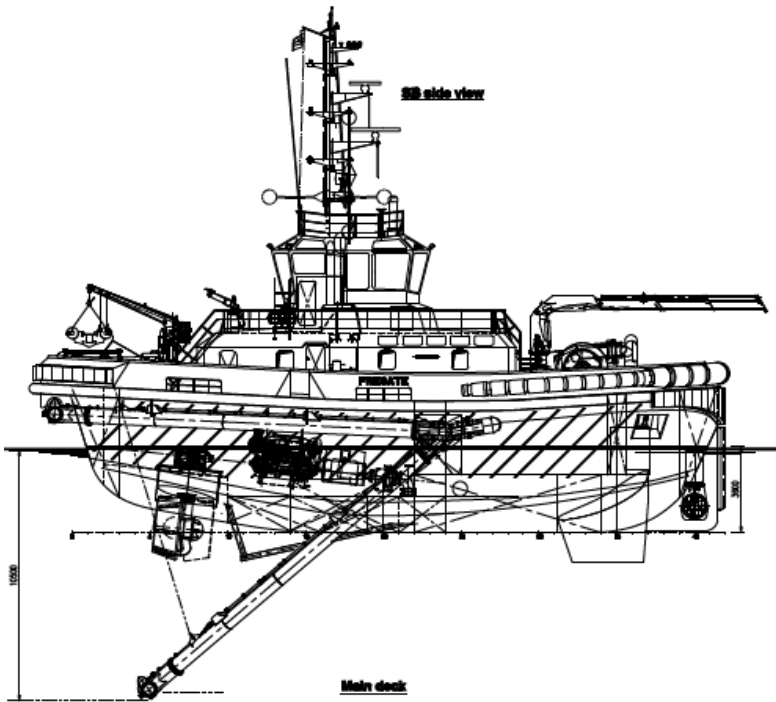
Accommodation up to 7 persons, completely insulated and finished with durable modern linings, sound absorbing ceiling in the wheelhouse and floating floors. Air-conditioned wheelhouse, accommodation and switchboard room. Accommodation above main deck with a captain's cabin, 3 officer cabins, 2 double crew cabin, pantry, mess/dayroom and sanitary facilities.

NAUTICAL AND COMMUNICATION EQUIPMENT (GMDSS A3)

Searchlight	2x Pesch 2000 W
Sea Radar System	1x Furuno FAR-2117
River Radar System	1x RHRS-2014
Magnetic Compass	1x Cassens & Plath
Gyro Compass	1x Anschutz Compact 22
Autopilot	1x Simrad AP-70
GPS	1x Furuno GP-170
Echosounder	1x Furuno FE800
VHF Radio Telephone	2x Thrane & Thrane Sailor RT6222
VHF Hand-Held	2x Jotron, Tron TR-30
Navtex	1x Furuno NX-700 A
AIS	1x Furuno FA-170
Intercom	1x Vingtor
SSB	1x Thrane & Thrane Sailor 6310
Ecdis (Solus Approved)	2x Furuno FMD 3100
Meteo System	1x Obsermet OMC115
INMARSAT-C	1x Thrane&Thrane, Sailor 6110
TV-System	1x RR Electronic Delta 32

WID TUG 2915 HYBRID®

“FREGATE”



DAMEN

DAMEN SHIPYARDS GROUP

Rivierdijk 544
3371 EB Hardinxveld-Giessendam
The Netherlands

P.O. Box 60
3370 AB Hardinxveld-Giessendam
The Netherlands

phone +31 (0)184 61 30 88
fax +31 (0)184 61 77 93

info-dsha@damen.com
www.damen.com