



FIXED LINKSPAN

DAMEN CIVIL PRODUCT

GENERAL

Ref/No 249897
 Basic functions Linkspan

DIMENSIONS (APPROX.)

| | Pontoon | |
|--------|---------|---|
| Length | Varied | m |
| Width | Varied | m |
| Height | Varied | m |

CONSTRUCTION / FOUNDATION

- Steel/concrete pile foundation;
- Steel/concrete structure on piles (prefabricated)
- Steel suspension frame;
- Counterweight;
- Spud poles;
- Retaining structure.

Bridge:

- Main girder;
- Secondary girders;
- Deck of steel grating / superstructure;
- Finishing layer asphalt, coating, mortar, etc;
- Guardrail.

AUXILIARIES & INSTALLATIONS

- Hydraulic hoists;
- Chains.

Bridge:

- Side Girders
- Approach Ramp

DESCRIPTION

The Damen fixed linkspans consist of bridge sections supported on one side at the quay and on the other side supported by a suspension frame. This suspension frame is normally founded on piles, though other options are possible. On the suspension frame either a hydraulic installation and/or a counterweight solution allows the bridge deck to be adjusted to the tidal range and to accommodate the vessel movements

OPTIONAL MATERIALIZATION

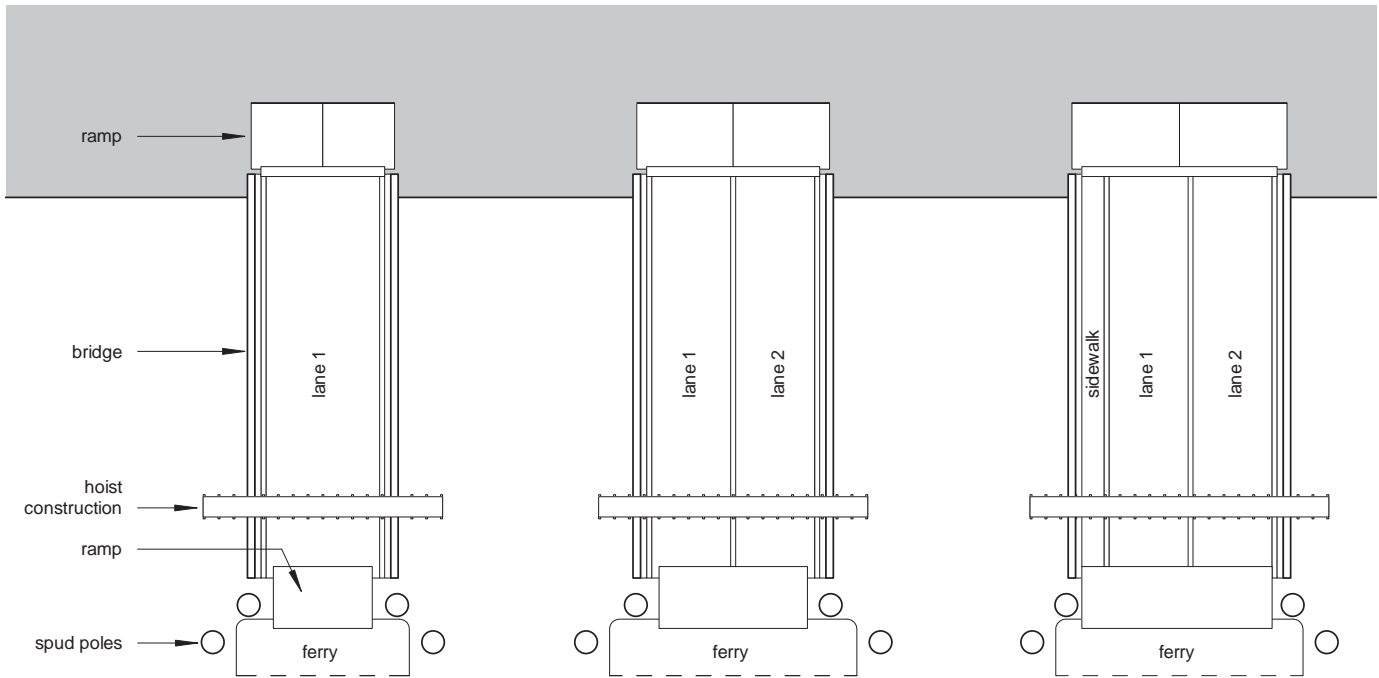
- Three layer System;
- Anodes zinc;
- Marine coating system.
- Bolts hot dip galvanized.

OPTIONAL

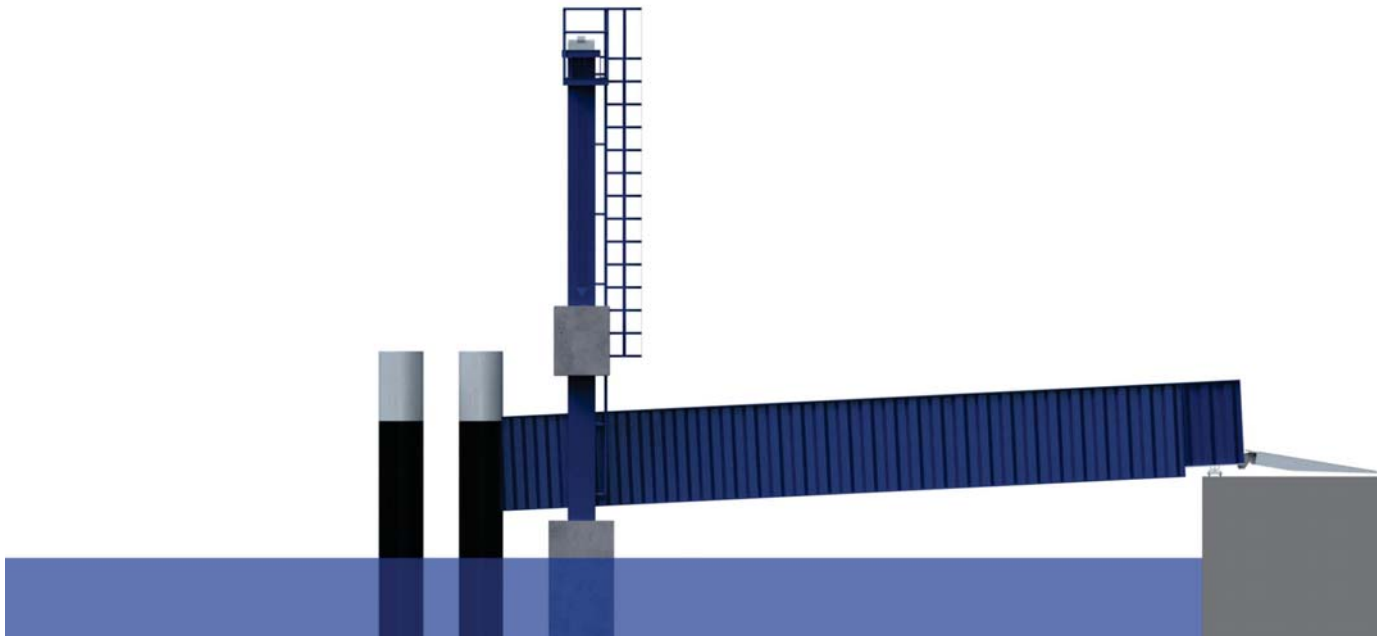
- Slackening structure;
- Quay fender System;
- Lighting fixtures / street lights;
- Lineation;
- (Automatic) gates;
- Power packs / power units;
- Ticket sales cabin(s);
- Fire extinguishing equipment;
- Water supply;
- Safety / life saving equipment.

FIXED LINKSPAN

DAMEN CIVIL PRODUCT



TOP VIEW



SIDE VIEW



DAMEN SHIPYARDS GROUP

Avelingen-West 20
4202 MS Gorinchem
The Netherlands

P.O. Box 1
4200 AA Gorinchem
The Netherlands

phone +31 (0)183 63 99 22
fax +31 (0)183 63 21 89

info@damen.com
www.damencivil.com