



TRANSFER AREA

DAMEN CIVIL PRODUCT

GENERAL

Ref/No	13750
Basic functions	Sideways vessel transportation

DIMENSIONS (IN EXAMPLE ABOVE)

Length	50	m
Width	30	m
Height	1	m
Area	1500	m ²
Volume	N/A	m ³

CONSTRUCTION

- Founded on piles or sheet pile foundation;
- Concrete foundation works;
- Reinforced concrete floor structure;
- Transfer cradle is a prefabricated steel structure with cast iron wheels;
- Rail beams/lines according routing plan.

INSTALLATION

- Electric-hydraulic winches;
- Stand-alone outdoor electrical distribution box 127-220V;
- Stand-alone outdoor electrical distribution box 440V;
- Electrical installation;
- Water installation (if requested);
- Sewage and drainage installation.

DESCRIPTION

The Damen transfer area makes it possible to transfer a vessel in perpendicular direction of the production and slipway lines. With this movement a vessel can be transferred from one production line to the other or to the slipway. It also provides you the possibility to create several extra berthing places on your yard at which the vessels can be maintained/serviced.

Besides the use of transportation, the transfer area can be used as an area for cleaning and blasting.

OPTIONAL TOOLS AND EQUIPMENT

- Heavy lifting equipment;
- Blasting & painting equipment;
- Tugs, Multicats and/or other workboats;
- Engine powered/electrical boom lift;
- Telehandlers/forklifts;
- Construction tools and lifting materials;
- Workshop tools & equipment;
- Workshop container (incl. tools & equipment).

ADDITIONAL OPTIONS

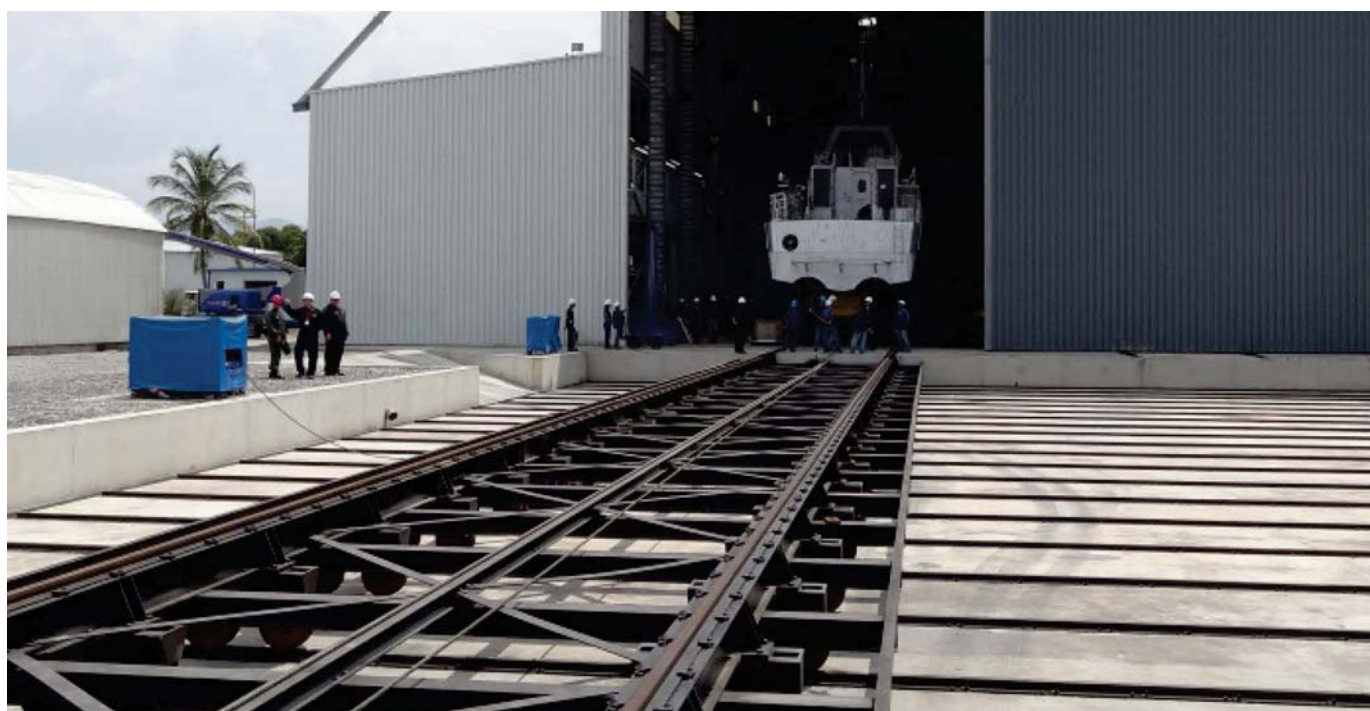
- Second transfer cradle (increased capacity);
- Winch house(s)/sheds;
- Deepened transfer area;
- Additional berthing places to increase revenues;
- Ship lift or slipway construction;
- Production/repair facility.

TRANSFER AREA

DAMEN CIVIL PRODUCT



SIDE CRADDLES



EFFICIENT VESSEL TRANSPORTATION

DAMEN

DAMEN SHIPYARDS GROUP

Avelingen-West 20
4202 MS Gorinchem
The Netherlands

P.O. Box 1
4200 AA Gorinchem
The Netherlands

phone +31 (0)183 63 99 22
fax +31 (0)183 63 21 89

info@damen.com
www.damencivil.com

© No part of the leaflet may be reproduced in any form, by print, photo print, microfilm, or any other means, without written permission from Damen Shipyards Group