



# DAMEN SPILL PONTOON® 2116

"MAJA 5"

## GENERAL

YARD NUMBER 523815  
 DELIVERY DATE March 2015  
 TYPICAL APPLICATIONS Collecting spillage of bulk during transshipment  
 TYPICAL OPERATION AREA Harbours, Inland waters  
 OWNER Maja Equipment BV

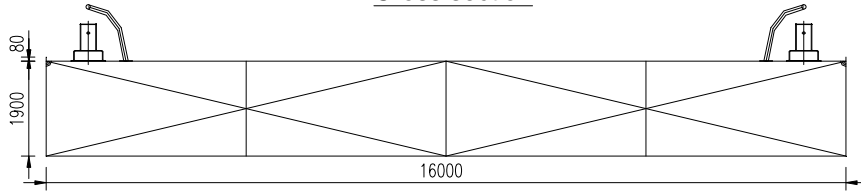
## DIMENSIONS

LENGTH MOULDED 21,00 m  
 BEAM MOULDED 16,00 m  
 DEPTH MOULDED 1,90 m  
 HEIGHT AT SIDES 1,98 m

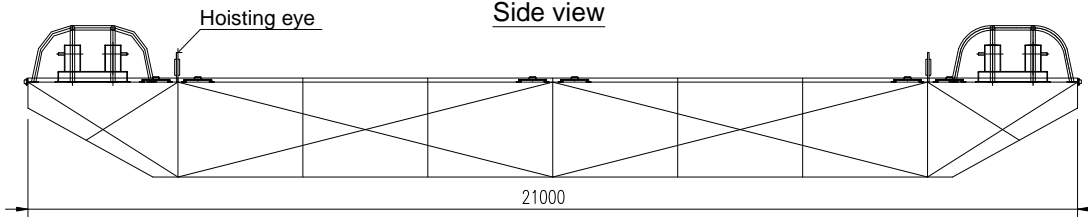
## STANDARD EXECUTION

BOLLARDS 4 pcs. SWL 65 kN  
 FRAMES AROUND BOLLARDS To avoid that wires get stuck behind the bollards  
 MANHOLES One bolted manhole on each compartment. The compartments with a deck dowel have two manholes.  
 LADDERS Fixed ladders are provided in each void space  
 CLOSABLE DECK DOWELS 2 pcs to collect drain water  
 LIFTING LUGS 4 pcs for lifting the pontoon itself  
 BASE PLATES 34 base plates on main deck all around to be used for removable lashing eyes  
 LASHING EYES 10 loose lashing eyes are provided  
 FENDERING HMPE fender system at bow and stern  
 DRAUGHT MARKS At fore and aft on PS and SB every 20 cm

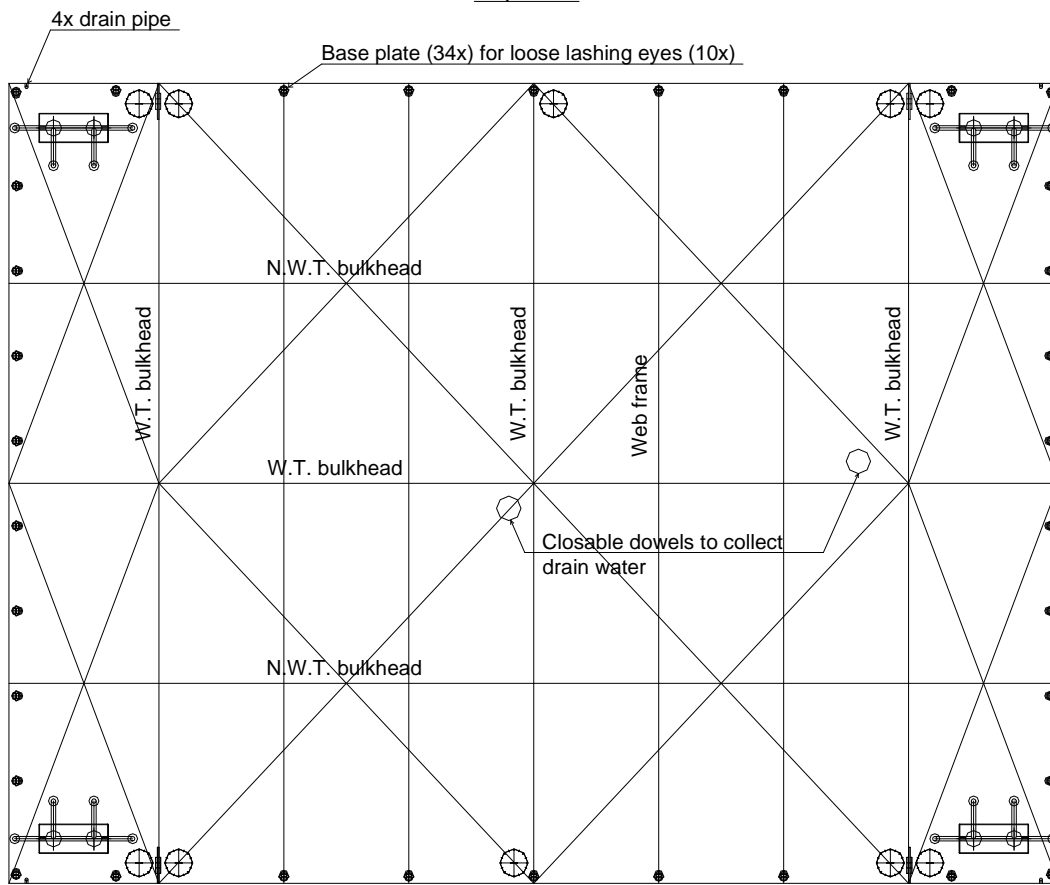
Cross section



Side view



Top view



# DAMEN SPILL PONTOON® 2116

"MAJA 5"

## DAMEN

DAMEN SHIPYARDS GORINCHEM

Member of the DAMEN SHIPYARDS GROUP



Industrieterrein Avelingen West 20  
4202 MS Gorinchem

P.O. Box 1  
4200 AA Gorinchem

The Netherlands

phone +31 (0)183 63 99 11  
fax +31 (0)183 63 21 89

info@damen.com  
www.damen.com